



## Company Introduction:

Poly-Supreme Technology Co., Ltd. are innovative and creative member companies under the mother group – “China Poly Group Co. Ltd. / BaoLi Group”; Established in 2002, our company has been specialized in the manufacturing of intellectual and biometrics security products for the Automotive Industry.

Poly-Supreme Technology Co. Ltd. has earned global recognition as experts in multiple sectors of high-tech products including the incorporation of Biometrics Technology in the Automotive Industry with Fingerprint Car Security System.

## Product Introduction

The Fingerprint Automobile Security System is clearly one of the most innovative inventions introduced to Consumers and Businesses based on fingerprint-control technologies available today. This device combines a highly advanced car security control system with the latest advancements in Human Biometrics research and development applications. The company’s spotlighted core product is becoming well known as the “Fingerprint Car Starter - Celularm”, which is a state-of-the-art product for auto industry. This device provides various solutions including fingerprint control-access, advanced auto-alarming functions, anti-theft protection, mobile phone hands-free convertible functionality, voice instruction, and automotive applications for parking, radar etc. It has been patented at the “SIPO - State Intellectual Property Office of P.R.C.” identified with Patent No.: 03233817.1). The Fingerprint Car Starter has also been tested and approved by the General Administration of Quality Supervision of the P.R.C. with production quality standard accordance Q/SZ 5-2005, and also certificated with the **CE-MARK** and **ROHS** certification. This innovative device is being widely distributed and exported globally. It is becoming a standard for Consumers and Businesses for Automobile security and drivers throughout the world.



## Main Function Introduction:

### *I. Live Fingerprint Identification*


System utilizes Biometrics Fingerprint identification technology. This will encode the car security system and starting functions of the vehicle. Only authorized drivers with enrolled fingerprints can start the car engine, or enable and disable the setting of the alarm. The system is prevents alarm decrypting. The Fingerprint Car Starter can store a maximum 9 user’s fingerprints, divided into 3 categories, the master driver holds 1 password that can easily enroll or delete records to adjust users. This enables applications for friends, family, or fleet management to manage the vehicle.

### *II. Automatic Engine Starter*

Inserting a car key or using keyless ignition devices is useless unless fingerprint recognition is initiated. If

someone attempts to start the vehicle by inserting the car key into the ignition switch and turning to the “ON” position, they must input the correct authorized fingerprint, and the car will start within 0.8 seconds.

### ***III. Quick Alarming:***

Under the circumstances that any unauthorized person  breaks in the vehicle, or unlocks it without permission of the system owner, the car will alarm immediately. Without the correct fingerprint verification, the Quick Alarming function will prevent vehicle ignition and stop fuel supply to the engine. The car will never be started without the correct fingerprint input.

### ***IV. Enable and Disable the Alarm Function:***

The system utilizes a password controller that will verify the “Master Driver” of the vehicle. Only the master user can enable and disable the alarm functions by using the password controller. The valet mode which is under the “Deactivated Alarm Status “, allows the master user to lend the vehicle to a friend or leave the car with the mechanic or check it in for a simple oil change procedure. By accessing the correct password, vehicle owner can easily enroll or delete fingerprint records to adjust users. All the input setting is guided by voice instruction or key pad.

### ***V. Flexible Storage Memory Function:***

By following the device’s voice instruction guidance, The Fingerprint Car Starter can store a maximum of 9 user’s fingerprints of authorized drivers, divided into 3 categories; the master driver who holds 1 password can easily enroll or delete records to adjust users. This makes the Fingerprint Car Starter is great for friends, family, or fleet management purposes.

### ***VI. Product Upgrade Functions:***

The system of The Fingerprint Car Starter can be upgraded upon request. For example, the number of users / fingerprints’ in the memory storage can be increased or decreased at anytime for fleet management or Business purposes. This allows specific customization for the system. Subsequently, the extended upgrade functions can also limit the time of the validity of fingerprints. For example, for car -rental purposes, the product can be set for “number of days or hours of validity”, specifically for the customers who rent the vehicle within a certain length of the time for rental.

# FULL SET OF THE FINGERPRINT CAR SECURITY SYSTEM



## **COMPONENT INTRODUCTION :**

- 1.Host
- 2.Fingerprint enroller
3. Password controller insert
4. Steering wire insert
5. Power wire insert
6. Speaker
7. Password controller
8. Insert of the password controller and fingerprint enroller
9. Steering wire
10. Power wire ( & the Fuse in Green Color )

## **TECHNICAL SPECIFICATION :**

### **FINGERPRINT CAR STARTER CELULARM”**

- a) Rated current of mainframe: 12V DC
- b) Rated current of mainframe in standby status < 20mA
- c) Rated current of mainframe in starting status is 150mA
- d) Rated current of mainframe in the status of voice is 100mA
- e) Max. capacity of relay working mainframe > 40A
- f) Max. power for normal working is less than 24W
- g) Normal working temperature: -45 to + 85 degrees Celsius
- h) Relative humidity : from 5% to 95%
- i) Atmosphere pressure: 86 ~ 106kpa

- j) Fingerprint enroller scans by **"True Living Biometrics Identification Technology"** .:
- dry finger
  - wet finger
  - dirty finger
  - finger blood pressure, blood vein pattern
  - finger temperature
- k) Identification speed: less than 0.8 - 2S
- l) Probability of not acceptance of the correct fingerprint is less than 0,0000001
- m) Probability of acceptance of the incorrect fingerprint is less than 0,00000000001
- n) User capacity: 9 fingerprints in 3 groups with 1 password holds by master.




## **System Installation Manual:**

### **The following should be used as a guide for your installation:**

**NOTE:** We recommend that the installation of the Fingerprint Car Starter is completed by a certified Automotive Specialist. The install takes approximately 45minutes. During the installation procedure, do not insert the car key into the ignition switch, and please ensure all the circuit wires are properly connected with the proper wiring insulation.

- The installation of this product is based on the O.E.M. security system of the car. There are not any changes made from the original circuit wiring. The original car system and safety mechanisms will not be influenced or changed from the installation.
- To ensure proper installation, perform a safety check of the vehicle before beginning. All O.E.M. equipment must be inspected for normal operation and functionality.

Before installation, you must review the following:

1. Read the Instruction and Installation Manual book  thoroughly and strictly follow the installation wire-connection chart for all the connection and installation steps.
2. Be sure the various parameters and the technical functions of your car are in good and standard status

before installation.

3. Always avoid touching or changing SRS airbag, ABS lights, Engine Trouble light, Car Computer Board wiring or any other O.E.M. Equipment.
4. When you scan your fingerprint to start your car, the car should NEVER be in gear.
5. All wires must be in securely connected and insulated.
6. When using a Computer Safe Circuit Tester, avoid short circuits to prevent damage to the vehicle.



**IMPORTANT NOTE:**

**1. Please check carefully if your technicians have correctly and properly connected the ' ACC' and ' ON ' testing wires. Some cars do have 1-ACC and 2-ON gears, but some cars has only got ' ON ' gear. The ACC and ON wires should be connected respectively to 'ACC' and 'ON ' according to the wiring diagram. However, if the car that you install doesn't have the 'ACC' gear, please connect both ' ACC' and 'ON 'wires to the 'ON'.**

**2. Our product controls the fuel pump, the power supply and ECU, some cars after 1998 do have an ECU , but those old ones before 1998 don't, so it is not necessary to be a must to connect the wiring to ECU during installation if your car doesn't have an ECU. If your car doesn't have an ECU, just neglect the ECU connection from the wiring diagram.**

“Fingerprint Car Starter Alarming System” (Touching Style enroller)



**IMPORTANT NOTE:**

**The Fingerprint Car Starter System was designed specifically for installation on vehicles for both Automatic Transmission and Manual Transmission, please ensure the Transmission is in good condition and before installation, make sure the gear is neutral.**

**In addition, the Fingerprint Car Starter System is Universal for all different cars. The system is Universal for all kinds of different models, it is suitable for trucks, SUVs, Bus and Coach, Tractors or Passenger cars of 24V / 12V DC, Diesel or gasoline, Manual or automatic transmission. Normally the 12V DC system is defaulted for production and export, it is applied for standard passenger cars only, if you wish to apply trucks or 24V vehicles, please specify to us and we will produce the system for 24 V usage and designated application.**



## OPERATION PROCEDURE:

After Installation is completed, DO NOT turn the car-key to the ignition “ON” position of the switch, to activate the device. Please use the KEYPAD password controller directed to the LED light on the fingerprint scanner, then press “\*” button on the password controller. Then you should enroll your new fingerprint and activate the fingerprint security to ENABLE function first. The voice instruction will guide you through the operation process.

### Select Language of operation:

#### VOICE INSTRUCTION FOR CHOOSING LANGUAGE:



**FOR CHINESE – PRESS “1”**



**FOR ENGLISH – PRESS “2”**

### 1. Enrollment and Input of fingerprint

The voice instruction of the system will request you to input a 6-Digit password.

(The default password is **123456** ).

After inputting the password **123456** PRESS “#” then the voice instruction will guide you through the procedure of following main options after you have selected a language.

#### VOICE INSTRUCTION FOR MAIN OPTIONS:



**TO ENROLL YOUR FINGERPRINT – PRESS “1”**



**TO DELETE YOUR FINGERPRINT – PRESS “2”**



**TO ENABLE THIS FUNCTION – PRESS “3”**



**TO MODIFY YOUR PASSWORD – PRESS “4”**



**FOR SYSTEM SETTINGS – PRESS “5”**

To input a new Fingerprint or **[New Enrollment]**, PRESS 1.

The voice instruction will provide the choices of which category you want to input and store. This system has set 3 groups of users storage capacity, each group can store up to 3 users’ fingerprints, a total of 9 fingerprints can be stored. (for ex.: You could use the 1st category to input Family Member’s Fingerprints, 2<sup>nd</sup> category for friends, 3<sup>rd</sup> category for temporarily users etc...)

#### VOICE INSTRUCTION:

 **TO ENROLL THE 1<sup>st</sup> GROUP- PRESS “1”**

 **TO ENROLL THE 2<sup>nd</sup> GROUP- PRESS “2”**

 **TO ENROLL THE 3<sup>rd</sup> GROUP- PRESS “3”**

 **TO RETURN-PRESS“0”**

If you want to set the [New Enrollment] fingerprint to the 1<sup>st</sup> CATEGORY, PRESS “1”, then after you choose the group, the voice instruction will guide you for the enrollment process.

### **VOICE INSTRUCTION:**

 **IT IS THE 1<sup>st</sup> TIME TO ENTER NOW**

For the TOUCHING style enroller:

The instruction LED light will flash to remind you for the input, please place your fingerprint flat on the right position of the metal surface of the enroller, and press for about one second.

After the correct and successful enrolment, the system will continue to give you further **VOICE INSTRUCTION:**

 **IT IS THE 2<sup>nd</sup> TIME TO ENTER NOW**

Repeat the above input procedure if the 2<sup>nd</sup> input is correct and successful, the system will give you voice instruction to continue with the final enrollment.

### **VOICE INSTRUCTION:**

- **IT IS THE 3<sup>rd</sup> TIME TO INPUT NOW**

Repeat the above input procedure. If all the inputs are correct, the system will give you voice instruction

### **VOICE INSTRUCTION:**

 **SUCCESSFULLY OPERATED, TO RETURN-PRESS “0”**

or you can press “\*” button to complete the voice instructions.



### **IMPORTANT NOTE:**

When you input the fingerprint, every fingerprint has to be enrolled 3 times with the same finger. Every time you input the fingerprint, place flatly of your finger on the enroller panel. The system will reject the input if there is large deviation of the contact position between the finger and the scanner panel. The system will also reject if the contact position is the same without changes.

The system does not request that you use a specific finger, any finger will do. However we suggest the thumb is the best choice, as the printing of thumb is much clearer and convenient. For the

registration, the finger should be intact and in good print status.



### **IMPORTANT NOTE:**

**Whenever you have completed the enrolment of a new fingerprint input registration, then you should turn off the car key and take the car key out of the wheel lock and then wait for 10 seconds for the system reset before the new users 's fingerprint can work properly to use his new enrolled fingerprint to start the car.**

## **2. Cancel and Deletion of Fingerprint**

**If you want to [CANCEL], please PRESS 2**

When you want to cancel a stored fingerprint, press 2 during the voice instruction.

### **VOICE INSTRUCTION FOR MAIN OPTIONS:**



**TO ENROLL YOUR FINGERPRINT- PRESS "1"**



**TO DELETE YOUR FINGERPRINT- PRESS "2"**



**TO ENABLE THIS FUNCTION – PRESS "3"**



**TO MODIFY YOUR PASSWORD – PRESS "4"**



**FOR SYSTEM SETTINGS – PRESS "5"**

Then the voice instruction will guide through which categories that you want to cancel  
SEE BELOW:

### **VOICE INSTRUCTION:**



**TO DELETE THE 1<sup>st</sup> GROUP-PRESS "1"**



**TO DELETE THE 2<sup>nd</sup> GROUP-PRESS "2"**



**TO DELETE THE 3<sup>rd</sup> GROUP-PRESS "3"**

To cancel an already enrolled fingerprint record, the whole group (maximum 3 users) will be cancelled; individual fingerprint cancellation is not allowed.

### 3. ENABLE or CANCEL Fingerprint Security Alarming Function

If you want to **ENABLE / CANCEL SECURITY ALARM**, please PRESS 3

When you want to set the fingerprint security alarm function, press 3 during the voice instruction.



#### **IMPORTANT NOTE:**

After the installation of the product, the fingerprint security function is still not activated yet.

Please follow the voice instruction to **ENABLE** the fingerprint security function. Press the “\*” button on the password controller to enter the system setting, the voice instruction of the system will request you to input a 6-Digit password (The default password is **123456** ).

After the input of password **123456** PRESS “#“the voice instruction will guide you, please Press 3 to set the security alarm according to the below voice instruction for main options.

#### **VOICE INSTRUCTION FOR MAIN OPTIONS:**



**TO ENROLL YOUR FINGERPRINT-PRESS “1”**



**TO DELETE YOUR FINGERPRINT-PRESS “2”**



**TO ENABLE THIS FUNCTION- PRESS “3”**



**TO MODIFY YOUR PASSWORD – PRESS “4”**



**FOR SYSTEM SETTINGS- PRESS “5”**

#### **ENABLE / CANCEL the Fingerprint Security Alarm Function :**

Press the “\*” button on the password controller to enter the system settings, the voice instruction of the system will request you to input a 6-Digit password ( The default password is **123456** ).

After the input of password **123456** PRESS “#“ the voice instruction will guide you. Press 3 to **ENABLE** or to **CANCEL** the fingerprint security alarm function.



#### **IMPORTANT NOTE:**

The system **CAN AUTOMATICALLY DETECT** the fingerprint security function status whether the security function is already “ACTIVATED ” or “INACTIVATED” and gives relevant voice instruction to “ENABLE this function” or “CANCEL this function”.

When the fingerprint security function is already activated, the voice instruction from the main option will remind you to **CANCEL THIS FUNCTION – PRESS “3”**

## VOICE INSTRUCTION:

 **TO ENROLL YOUR FINGERPRINT-PRESS “1”**

 **TO DELETE YOUR FINGERPRINT-PRESS “2”**

 **TO CANCEL** FUNCTION- PRESS “3”

 **TO MODIFY YOUR PASSWORD – PRESS “4”**

 **FOR SYSTEM SETTINGS- PRESS “5”**

Vice Versa, if the security alarm is inactivated and in the “OFF” status, the voice instruction of main options will remind you to **ENABLE** THIS FUNCTION- PRESS “3”

## VOICE INSTRUCTION FOR MAIN OPTIONS:

 **TO ENROLL YOUR FINGERPRINT-PRESS “1”**

 **TO DELETE YOUR FINGERPRINT-PRESS “2”**

 **TO ENABLE** THIS FUNCTION- PRESS “3”

 **TO MODIFY YOUR PASSWORD – PRESS “4”**

 **FOR SYSTEM SETTINGS- PRESS “5”**

If you want to lend your car to someone or you have to send your vehicle to a mechanic or garage. Press the “\*” button on the password controller to enter the system settings, the voice instruction of the system will request you to input a 6-Digit password ( The default password is **123456** ).

After the input of password **123456** PRESS “#“ the voice instruction will guide you, please Press 3 to cancel the fingerprint security alarm function. The person using your vehicle can simply use the car key to start the car without the cancellation of the security alarm; he/she doesn’t need to input a fingerprint to start your car. When the car is returned to you, press 3 to activate and enable this fingerprint security function again. Once the security alarm is enabled you must input the correct authorized fingerprint to start the car again.

## 4. Change the Password

If you want to **[CHANGE PASSWORD]**, please **PRESS 4**

If you want to change the password, press the “★” button on the password controller to enter the system settings, the voice instruction of the system will request you to input a 6-Digit password (The default password is **123456** ).

After the input of password **123456** PRESS “#” the voice instruction will guide you.

### VOICE INSTRUCTION FOR MAIN OPTIONS:



**TO ENROLL YOUR FINGERPRINT-PRESS “1”**



**TO DELETE YOUR FINGERPRINT-PRESS “2”**



**TO ENABLE THIS FUNCTION – PRESS “3”**



**TO MODIFY YOUR PASSWORD – PRESS “4”**



**FOR SYSTEM SETTINGS– PRESS “5”**

Press 4 to change the password, the voice instruction will guide you as below:

### VOICE INSTRUCTION:



**PLEASE ENTER YOUR NEW PASSWORD,AND PRESS THE “#” KEY TO CONFIRM**

After you entered the new password, the system will guide you as directed below:

### VOICE INSTRUCTION:



**PLEASE INPUT AGAIN (YOUR NEW PASSWORD)**

After you entered the password again to confirm the new password, the system will guide you as directed below:

### VOICE INSTRUCTION:



**SUCCESSFULLY OPERATED,TO RETURN-PRESS “ 0 ”**

Press the “★” button to close and end the voice instruction.

## 5. Changing the Parameters

If you want to change the parameters of the system for customized use, press the “\*” button on the password controller to enter the system setting, the voice instruction of the system will request you to input a 6-Digit password ( The default password is **123456** ).

After the input of password **123456** PRESS “#” the voice instruction will guide you.



**TO ENROLL YOUR FINGERPRINT-PRESS “1”**



**TO DELETE YOUR FINGERPRINT – PRESS “2”**



**TO ENABLE THIS FUNCTION – PRESS “3”**



**TO MODIFY YOUR PASSWORD – PRESS “4”**



**FOR SYSTEM SETTINGS – PRESS “5”**

The product of this system can be modified to fit different types of vehicles and special needs of users including fleet and rental applications. You may set your parameters after hearing the voice instruction.

### VOICE INSTRUCTION:



**TO MODIFY YOUR PARAMETER– PRESS “1”**

**End of Manual Guideline (see parameter specifications listed below)**

If you choose to reset your parameters by inputting the parameter code shown below:

“\*” + Number+ “\*” + Number + “#”

## 2008 New Fingerprint System Parameter Table

Parameter Control	Default Value	Min. Value	Max. Value	Unit	Function	Setting
Ignition Duration Time	10	0	90	0.1Second	Ignition Duration Time	*1*x#
Times of Password input No. of times	5	1	30	Times	Allow to input password	*9*x#
Time Of Automatic Alarm Setup	10	0	255	1Second	Time Of Automatic Alarm Setup	*10*x#
Forbidden Cancellation of Alarm	173				X=91 Forbidden cancellation ,X=173 Allow cancellation	*11*x#
Alarm Duration	6	0	120	5Second	Alarm Duration,Set as 60S means continue alarming	*12*x#
Alarm Frequency	90	1	100	Times/Min.	Alarm Frequency in a minute	*13*x#
Siren / Headlight Flashing Delay Time	40	1	250	Second	Siren / Headlight Flashing Delay Time	*14*x#
ACC Polarity	0	0	1		0:0V while ACC grade is off; 1:12V while ACC grade is off.	*16*x#
ON Polarity	0	0	1		0:0V while ON grade is off; 1:12V while ON grade is off.	*17*x#

Door ON/OFF Polarity	0	0	1		0:ONWhen Door Close is 0V; 1: low electric power is available	*18*x#
Authorised Number Of Days	251	0	250	Days	Limit of the number of days of use, over or equal to 251 means limit cancelled.	*21*x#
Time Of Automatic Alarm Cancellation	24		25	Hours	Duration of automatic cancellation, over 25 means cancellation forbidden.	*22*x#
Forbidden Fingerprint Groups After Authorised Number of days	3	0	3		"0" for all groups forbidden;"1" for the first group forbidden;"2" for the second group forbidden;"3" for the third group forbidden.	*24*x#
Cancel all fingerprint records	x				Cancellation of all fingerprint records	*29*167#
System Power Cut off	x				System Power Cut off	*30*168#
System Reset	x				System	*31*169#
Anti Car Jacking Function	0	0	1		0: Off, 1:ON	*34*X#
<b>Validity of every interval timing for anti car jacking function ( Total 3 intervals )</b>	<b>3</b>	0	10	10Second	Unit :10Seconds	*35*X#

Cut off FM and audio amp	0	0	1		0: common mode, 1:Energy Saving mode	*37*X#
--------------------------	---	---	---	--	---	--------

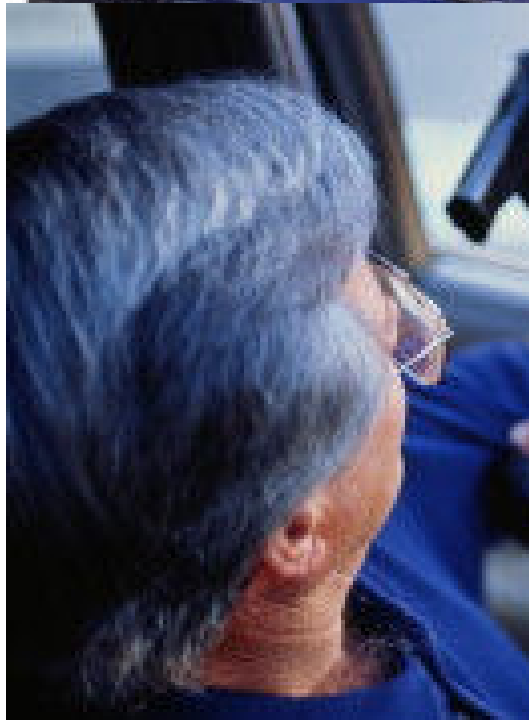
#### Additional Parameters

**\*31\*169#** for System Reset

**\*34\*0# or \*34\*1#** for Anti Car jacking function (To enable “1” and to cancel “0” )

**\*35\*X# ( Where X = 1-10 unit in 10seconds )** for setting the length of time interval of anti car jacking function.

## ANTI CAR JACKING FUNCTION



According to our customers' requests for those countries for ex. Brazil, South Africa, UK, and USA of extremely high car-jacking rate on the road. Poly-Supreme Technology Co., Ltd. has successfully designed and developed a new function for anti car jacking of our fingerprint car security system.

Imagine that all of a sudden, an armed carjacker open the door and break in as you stop at traffic lights or junctions, pointing a gun at you, when the car owners are hijacked, the hijacker will always take them with him in the car and drive for about 10 - 15 kilometers to make sure it is safe to repel the car owner out.

With the newly upgraded and designed

Anti Car Hi-jack Function means you can get out safe in the knowledge they won't get far. As soon as you are in a safe distance, the anti-hijack feature will initiate. This extended function programmed a voice warning will broadcast within a certain set-time after the driver door is forced to open. If no correct input, the car engine will be shut off within a set-time. So you could be safe and locate the car back not far away.

The defaulted set time for the anti car hijack function is 1 second after driver door is opened, the anti car jacking function will be activated and there are 3 levels of warning and reminders,

1<sup>st</sup> interval: 30 seconds of LED flash to remind you to input correct fingerprint to deactivate the alarm.

2<sup>nd</sup> interval: 30 seconds of voice instruction to give warning to input correct fingerprint.

3<sup>rd</sup> interval: 30 seconds later, if there is still no valid fingerprint input, the car engine will be shut off.

The open door time to activate the function is fixed for 1 second as default time, but you can change for these 3 interval time from min.

10 seconds to max. 100 seconds by changing the parameter.

Press "5" to change parameter, type \* 35 \* X ( where X is the parameter and the unit is 10seconds, you may change as X from 1 – 10 )

If necessary, we can designated setting and program the necessary length of time intervals.

You can choose by Keypad and press 5 for function to change parameter. Type \* 35 \* X # ( where X is the parameter can be set from 1 -10 means (10 seconds to 100 seconds).

### **Activation or Deactivation of Anti car jacking function by Press 5 to modify the parameter**

Activation: Enter Parameter \* **34** \* **1** # to enable this function.

Deactivation: Enter Parameter \* **34** \* **0** # to disable this function

**NOTE: IT IS NOT SUGGESTED TO CHANGE THE PARAMETERS WITHOUT PRIORITY REQUEST AND THE GUIDENCE OF THE SUPPLIER.**



### **Quality Guarantee:**

We guarantee that with proper installation of the device there will be absolutely no influence on the original system of the vehicle or cause any estimated danger for installers or users.

The device has been patented at the State Intellectual Property Office of P.R.C. with Patent No.: 03233817.1, and approved by the General Administration of Quality Supervision and Inspection of the P.R.C. with production quality standard accordance Q/SZ 5-2005, certificated with CE and RoHS and also approved homologation with European ONZ EKG 97 standard.

Quality is the source of power. We are devoting ourselves to offering the perfect solution for auto-theft.



### **Package Includes:**

Touching Style Fingerprint enroller, Main Host, DB9 connecting wire, 12-needle wire, 4-needle wire, 6-needle wire, password Keypad controller, Speaker, User Manual.

### **Contact Information:**

#### **Poly-Supreme Technology Co., Ltd. (Export Department)**

Mr. Michael Chiu ( Marketing Director )

Address: 10F, Block B, Hoi Luen Industrial Centre, 55 Hoi Yuen Road, Kwun Tong, Kowloon, Hong Kong.

Tel: 852-97238712 ; 852-65543877 Fax: 852-65543877

Email: michael@hksupremetech.com ; michaelchiu@poly.hk.cn ; fingerprintstarter@hotmail.com

Website: <http://www.hksupremetech.com>